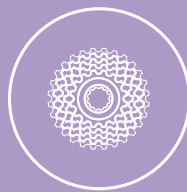
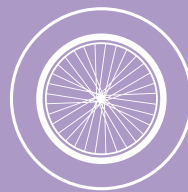


Chameleon LS



6
Gears



20"
Wheel



21.5kg
Weight



SPECIFICATION

Frame	Chameleon LS 6061 Aluminium
Colour	White or Wky Blue
Fork	Rigid Steel
Rear Derailleur	Shimano Tourney
Number Of Gears	6
Shifters	Shimano TX 50
Cassette	Shimano 6 Speed Freewheel
Chain	KMC
Pedals	Included (Folding)
Front Brake	V Brake
Rear Brake	V Brake
Rotor F & R	N/A
Handlebars	Promax W 600mm
Stem	Promax Adjustable Height
Front Light	Yes
Grips	Ergo Comfort
Rims	Aluminium Double Wall 20" Rims, 36H
Front Tyre	20 x 1.95
Rear Tyre	20 x 1.95
Mudguard F & R	Yes
Saddle	JST Suspension Saddle
Seatpost	27.2 x 300
Motor	Rear Hub Driven, 36V 250 WATT, MXUS Brushless Geared Motor
Battery	Samsung 36v 10AH Lithium Ion
Battery Upgrade Option	Samsung 36v 13AH Lithium Ion
Charge Time	3-5 Hours
Display	King Metre LED Display, 5 Levels of Assist, Front Light Control, Remaining Battery, Walk Assist
Range	Up to 40 Miles
Maximum Road Speed	Assistance up to 25km/H or 15 MPH
Accessories	Kick Stand, Rear Rack, Chain Guard, Rear Reflector
Weight	21.5kg Average

RRP (Inc VAT)

£849.99

BYO-16-LFD-7.8AH
BYO-16-LFD/SE-7.8AH
[7.8ah Battery]

RRP (Inc VAT)

£999.95

BYO-16-LFD-10AH
BYO-16-LFD-SE-10AH
[10ah Battery]

RRP (Inc VAT)

£1149.95

BYO-16-LFD-13AH
BYO-16-LFD/SE-13AH
[13ah Battery]

BYOCYCLES

Website: www.byocycles.com • email: sales@byocycles.com • Sales Line: (02392) 488 362